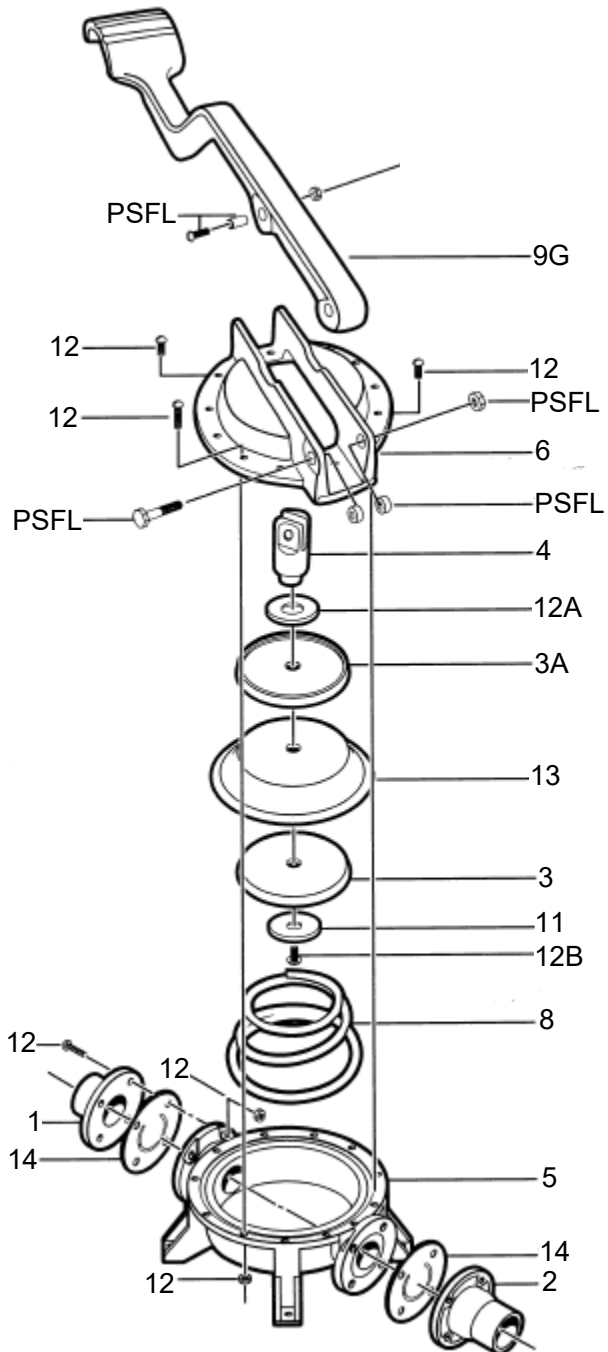


ITEM	PART NAME
1	Inlet Flange
2	Outlet Flange
3A	Top Button
3B	Bottom Button & SS Washer
4	Aluminum Clevis
5	Body
6	Clamp Ring
7	
8	Spring
9G	Foot Lever
12	Hardware Set
	Screw 1/2-20 x 1/2
	Screw 10-24 x 1/2 (2)
	Screw 10-24 x 5/8 (8)
	Screw 10-24 x 3/4 (10)
	Hex Nut 10-24 (18)
12A	Washer 1-11/16 x 1/2 x 1/16
12B	Washer 1/4 Flat Washer
PSFL	PIN SET
	Screw 10-24 X 3/4
	Hex Nut 10-24
	Hex Hd Screw 1/4-20 x 1-3/4
	Hex Nut 1/2-20
	PVC Spacer (2)
	Pin 5/16 x 3/16 x 1/2
13	Diaphragm
14	Flapper Valves (2)



Note:

A part is specified by **Part Model #**.

Part Model # =

Pump Family Model # + "." + Item #

e.g. **GL-0400D.5** (Body)



930 Waterman Avenue East Providence, RI 02914
 Ph: 888-438-1110 Fax: 401-438-2713
 Web: www.thebosworthco.com

Guzzler® GL-0400D