

Note:

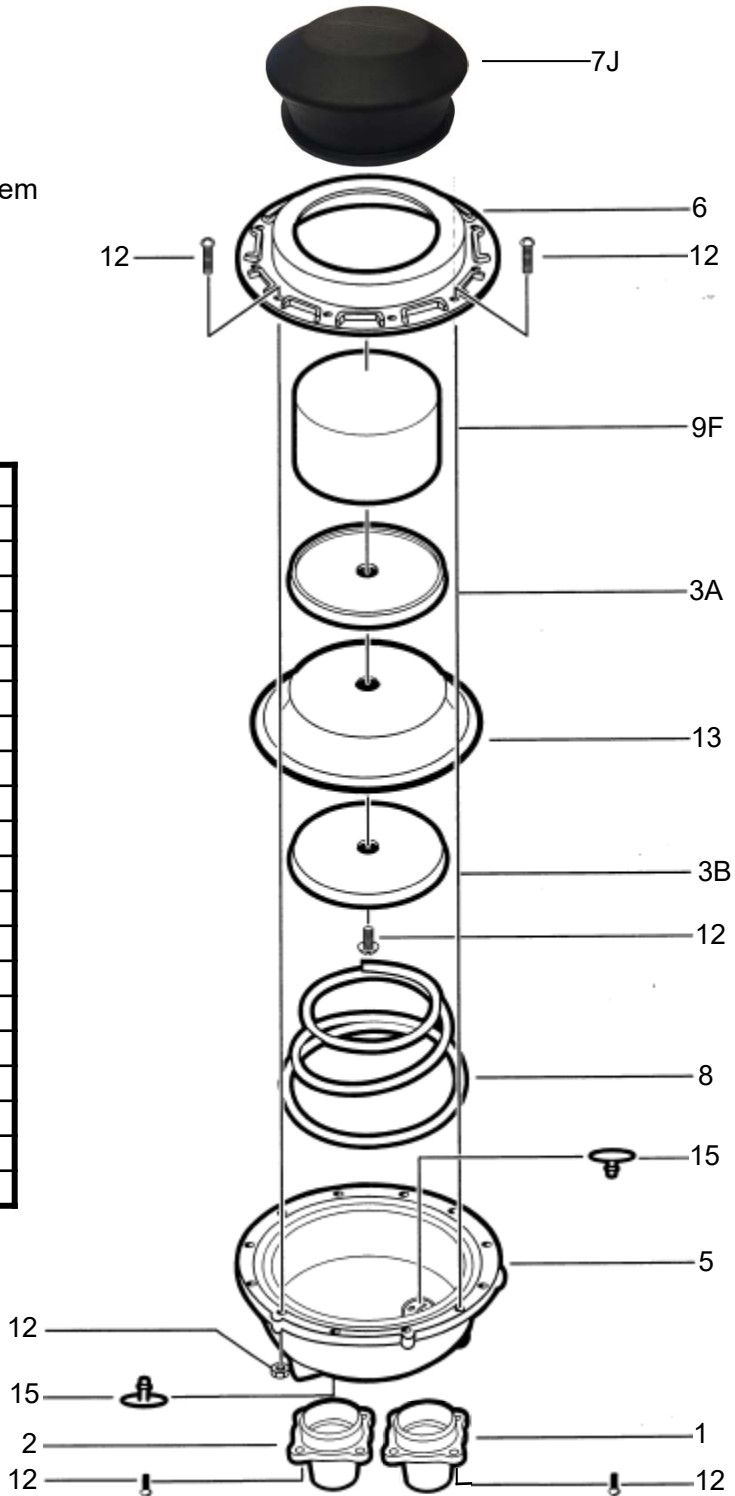
A part is specified by **Part Model #.**

Part Model # =

Pump Family Model # + "." + Item

e.g. **GF-1400D.8**
(Spring)

ITEM	PART NAME
1	Inlet Flange
2	Outlet Flange
3A	Top Button
3B	Bottom Button & SS Washer
5	Body
6	Clamp Ring
7J	Rubber Boot
8	Spring - Standard
8A	Spring - Lightweight
9F	Plunger
10	
11	
12	Hardware Set
	Screw 8 x 5/8 (8) inlet/outlet
	PPH10-24x3/4 (10) clamp ring
	PPH10-24x1/2 (2) clamp ring
	HN10-24 (18)
	TH1/4-20x1/2 (1) diaphragm
13	Diaphragm
15	Umbrella Valves (2)



Guzzler® GF-1400D

930 Waterman Avenue East Providence, RI 02914
 Ph: 888-438-1110 Fax: 401-438-2713
 Web: www.thebosworthco.com