

Disassembly and Lubrication of YV-095D-F (M-95) Y-Valve

A) Remove the handle (4) in order to remove the trim ring (13):

- 1) Remove the white plug (11) on top of handle (4).
- 2) Remove the screw (10) inside the handle.
- 3) Remove the handle (4).
- 4) Remove the trim ring (13) by removing the three screws and nuts (14).

B) Reattach the handle in order to complete disassembly of the Y-valve.

Note: Before further disassembly, use a marking pen to draw a witness line on the hose and on the adaptor (3A). This is essential to ensure proper alignment when reassembling the valve.

- 1) Reattach the handle (4) with the screw (10).
- 2) Loosen and remove all three screws (8), nuts (9) and spacers (6).
- 3) When all the screws are removed from the Y-valve, pull up on the handle with a twisting motion. This will remove the seat (5) and O-rings (7) from the body (1).
- 4) Inspect inside the body and clean if necessary.
- 5) Remove the screw (1) holding the handle (4) to the plug (2).
- 6) Remove the handle and stop ring (12) from the plug (2).

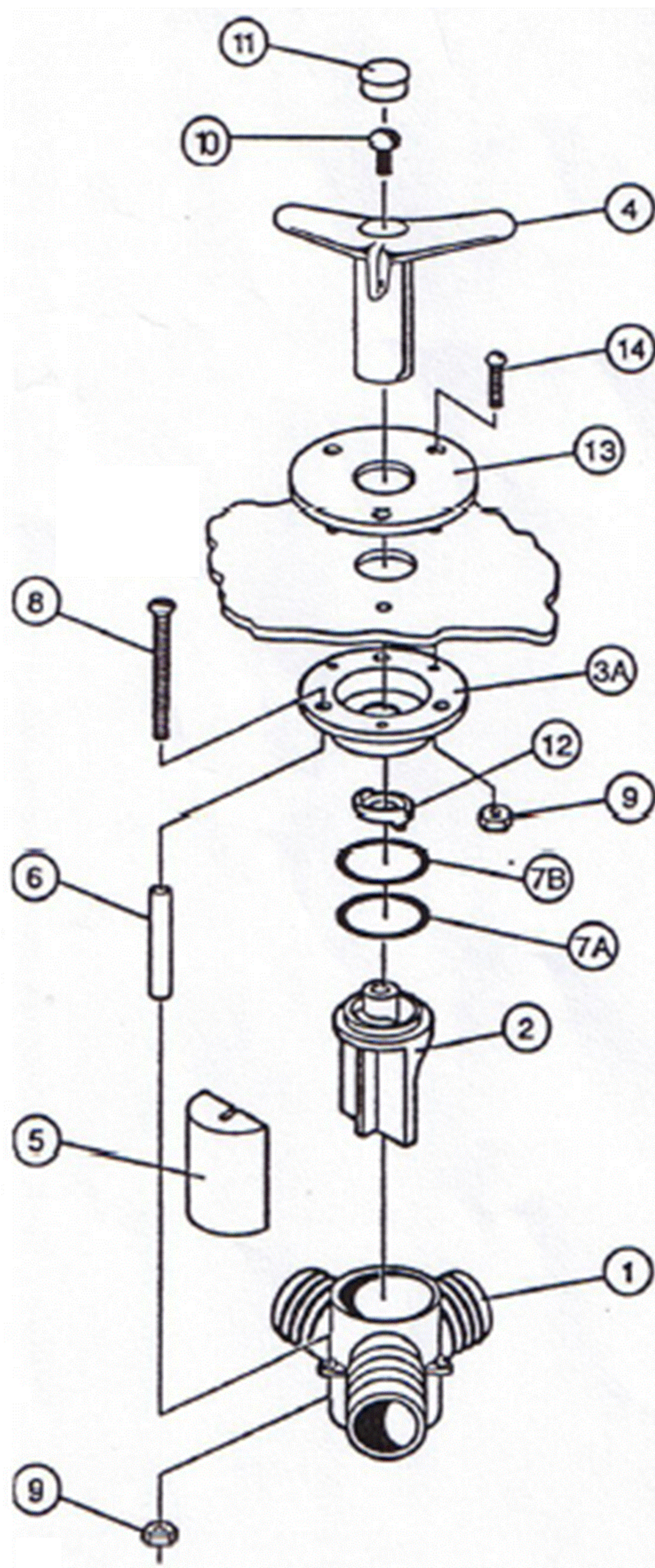
C) Lubricate the Y-Valve

- 1) Using the lubricant provided, grease the inside of the body completely.
- 2) Grease the seat and O-ring.

D) Reassemble the Y-Valve.

- 1) Reassemble the plug, seat, O-ring and stop ring into the body.
- 2) Using the handle, push down on the plug to be sure the seat and O-ring are all the way down inside the body.
- 3) Be sure the stop ring is flush with the top of the plug and the adaptor is sitting properly and aligned with the witness mark on the hose.
- 4) Replace all the screws, spacers and nuts. Be sure not to overtighten the nuts.
- 5) Replace the handle.

For lubricating grease, we recommend Dow Corning Silicone Grease #44.



Question

"My Y-valve is frozen and I can't turn the handle. Is there some way to lubricate it?"

Answer

Periodically, Y-Valves need to be lubricated to ensure proper operation. These instructions show how to disassemble and lubricate your flush mount "95" series Y-valve.

ITEM	PART NAME
1	Body
2	Plug
3A	Adaptor
4	Handle
5	Seat
6	Spacer – 1.735 in (3)
7A	O Ring #222
7B	Back Up Ring #BU222
8	Machine Screw 10-24 x 2 1/4 (3)
9	Nut 10-24 (6)
10	Machine Screw 1/4 -20 x 1/2
11	White Plug
12	Stop Ring
13	Trim Ring
14	Machine Screw 10-24 x 1 (3)